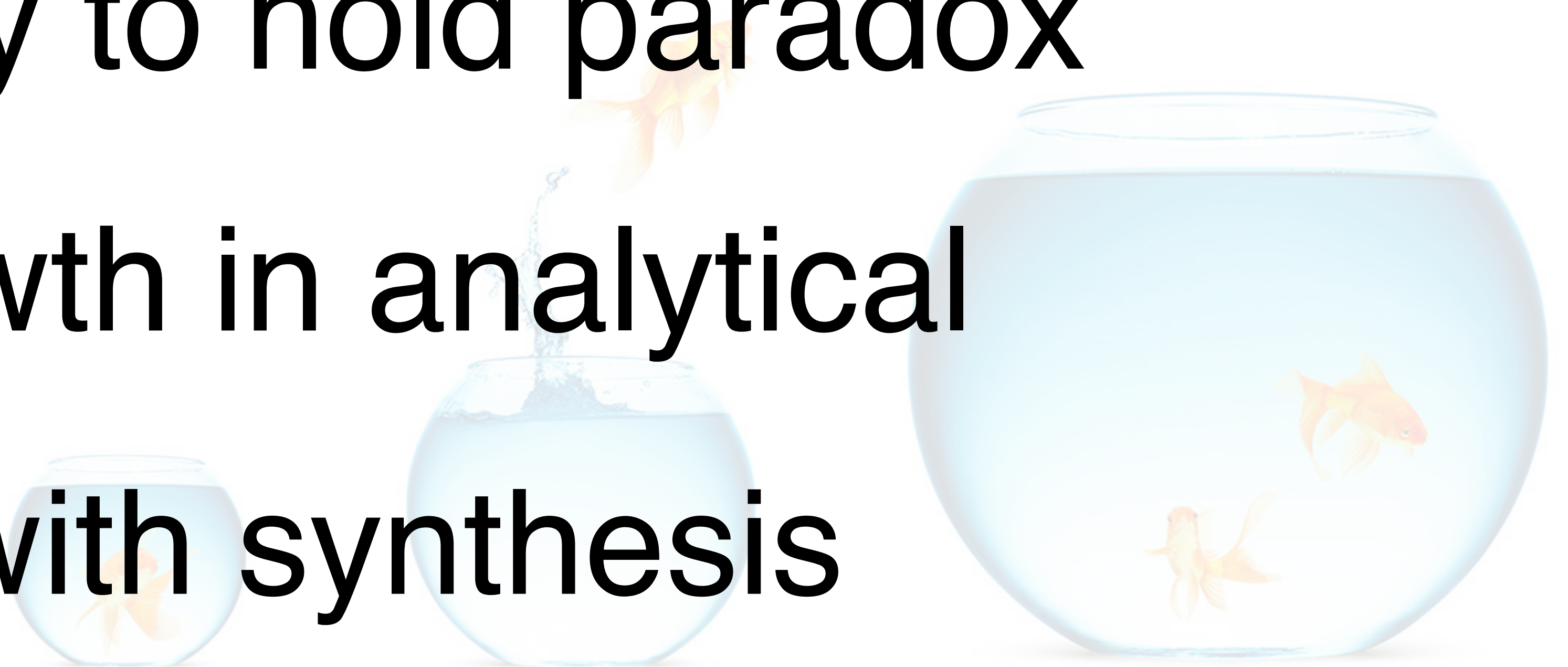


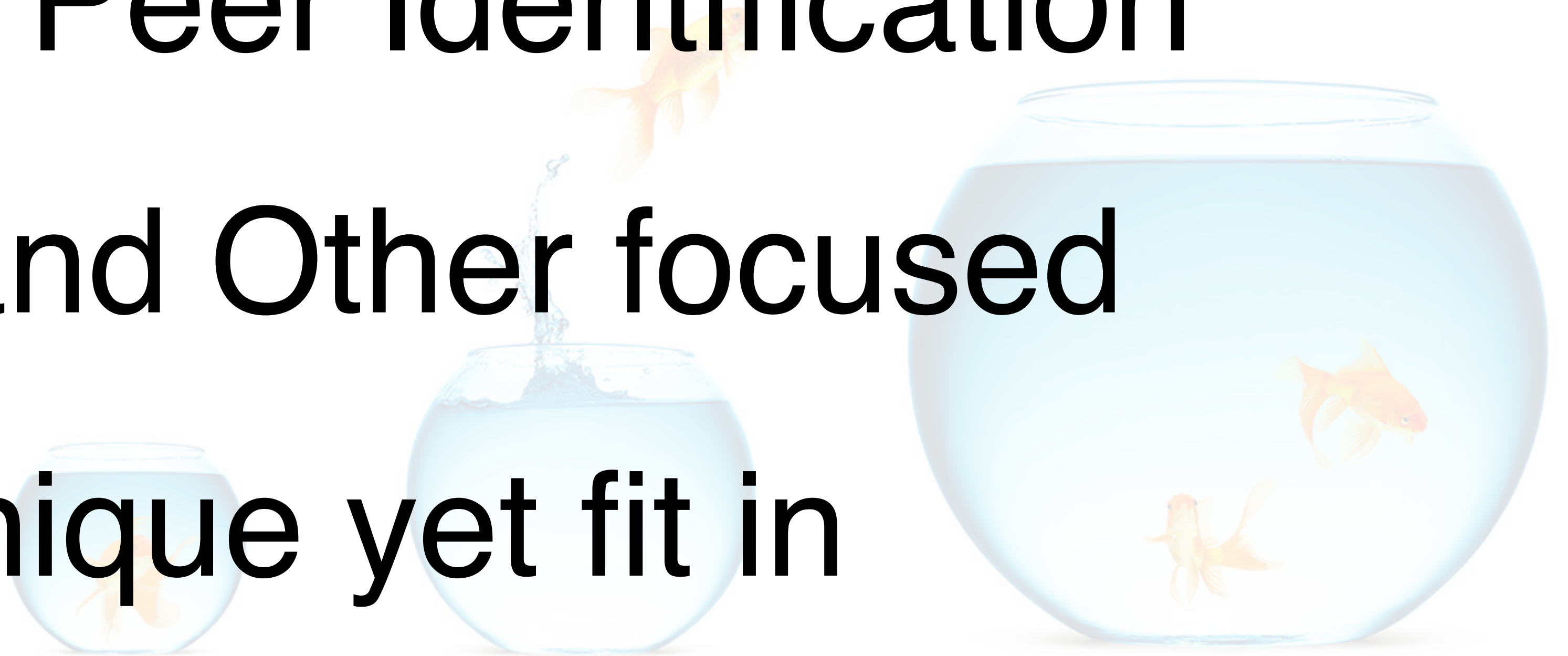
# Cognitive Development

1. Capacity for Abstraction
2. Limited ability to hold paradox
3. Massive growth in analytical
4. Needs help with synthesis



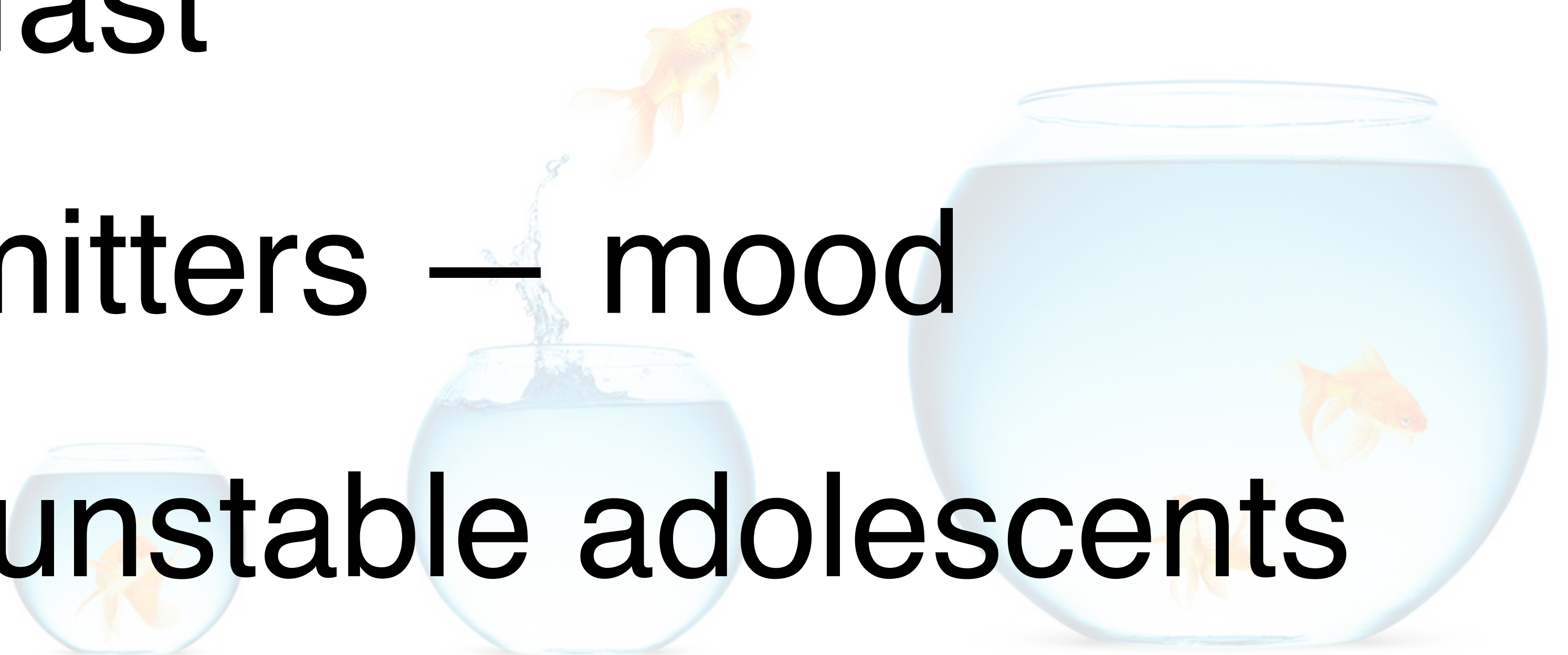
# Social Development

1. Competing Needs
2. Parental —> Peer Identification
3. Narcissism and Other focused
4. Terminally unique yet fit in



# Emotional Development

1. Prefrontal Cortex vs. Amygdala
2. Light switch fast
3. Neuro transmitters — mood
4. Reliance on unstable adolescents



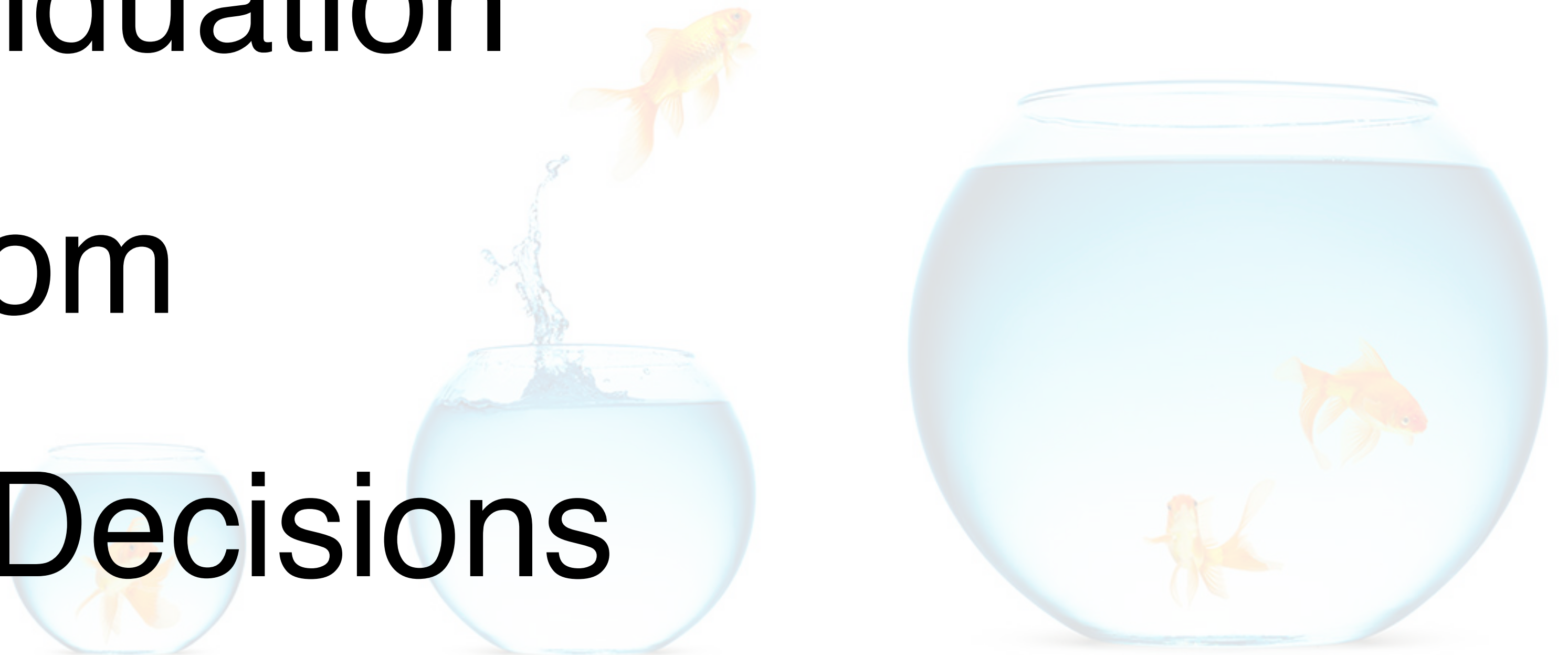
# Identity and Personality

1. Who am I? And why?

2. Intense Individuation

3. Dressing Room

4. Identify with Decisions



# Identity Shopping

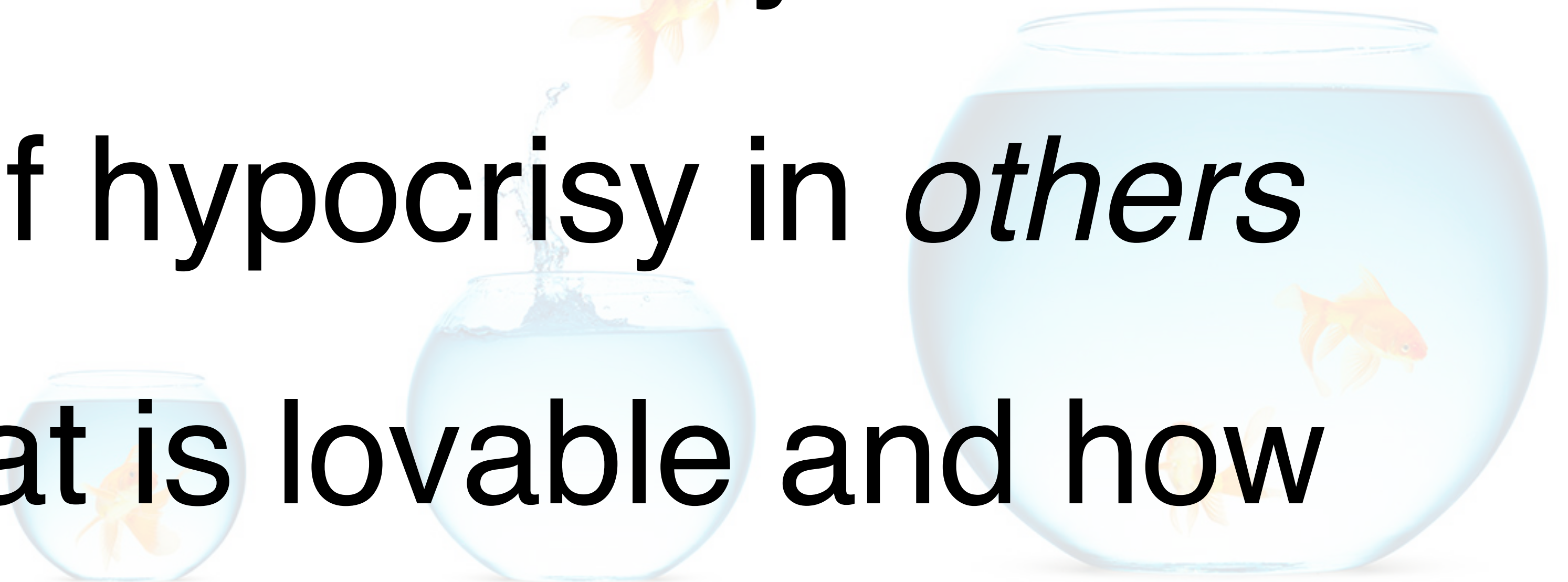


The background of the image is a close-up, shallow-focus shot of numerous light-colored wooden letter tiles. Each tile is a small, rounded rectangle with a single letter or symbol engraved on it in a dark, serif font. The tiles are scattered across the frame, with some in sharp focus in the foreground and others blurred in the background. The word "Language" is prominently displayed in the center, rendered in a large, bold, black sans-serif font. The overall composition suggests a theme of linguistics, communication, or the building blocks of language.

# Language

# Moral and Spiritual

1. Need all encompassing system
2. Black and white —> Grey
3. Awareness of hypocrisy in *others*
4. Learning what is lovable and how



# Accompanying Teens

1. Support and Challenge
2. Listen 2x more than speaking
3. Patience and Understanding
4. Expect fluctuations/inconsistency



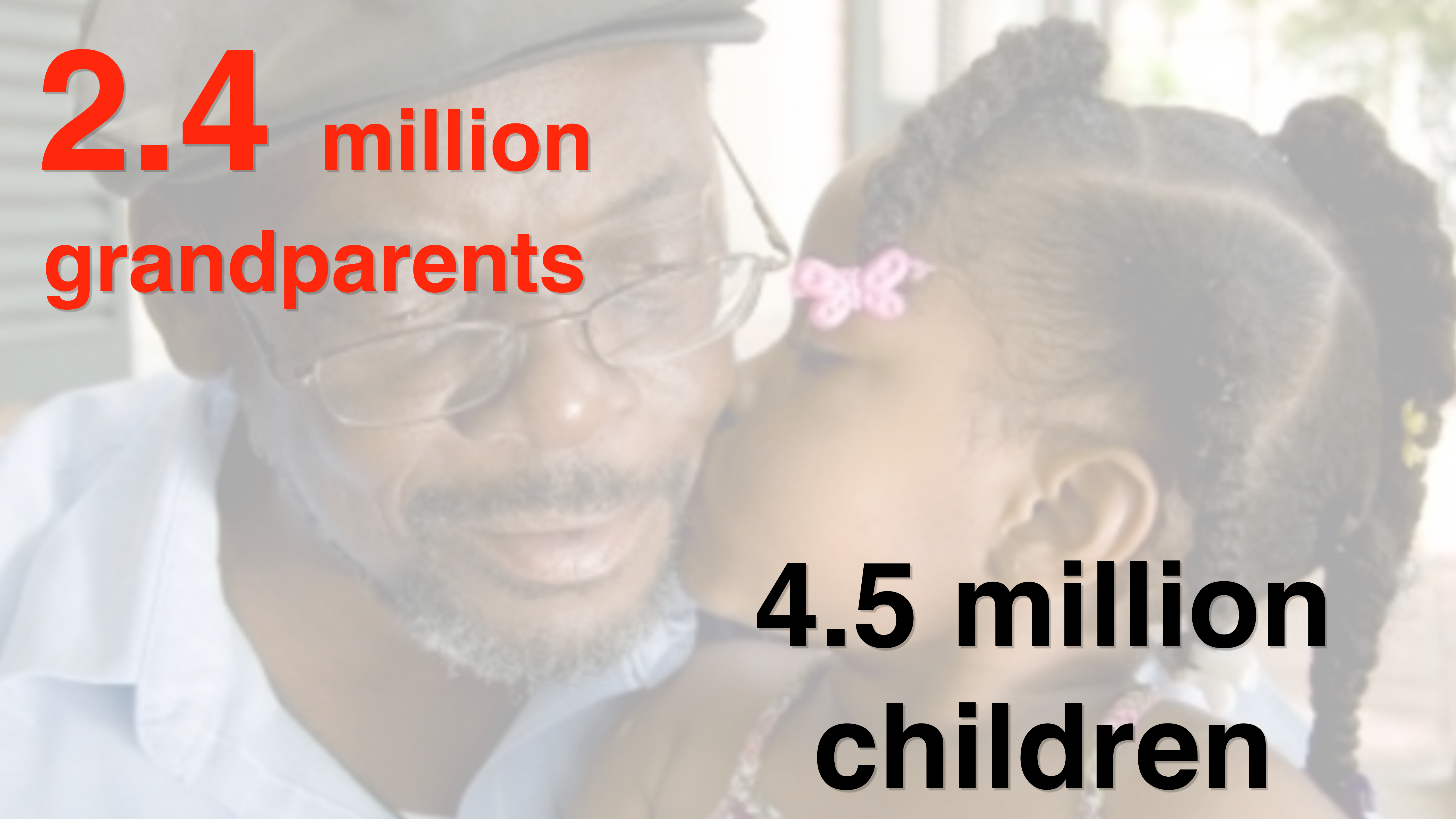
# Pastoral Considerations

## Adolescent Development

- Rapid brain development
- Identity Mirror shifts Parent/adult —> Peers
- Dressing room - bigger than ever
- Sexual identity is integral, but partial
- Competing needs to stand out/fit in, grow up/ be a kid
- Reinforce, specific/personal, current/temporary



**34 %**  
**Single**  
**Parents**



**2.4 million  
grandparents**

**4.5 million  
children**



**< 2 hrs/day**

**Face Time**



**> 9 hrs/day**  
**Screen Time**



**< 10 min**



< 7 min



**Together**  
**Alone**





45%

**Divorce**

67%

**Blended families**

# Foster Care

397,122



**2.5** million

**Adopted**

59%





250,000+

☐ TRUE

☐ FALSE

**4 out of 5 teens who attempt  
suicide have given clear warning  
signs**

**True**

**Depression increases the risk  
of teen suicide by 12 times**

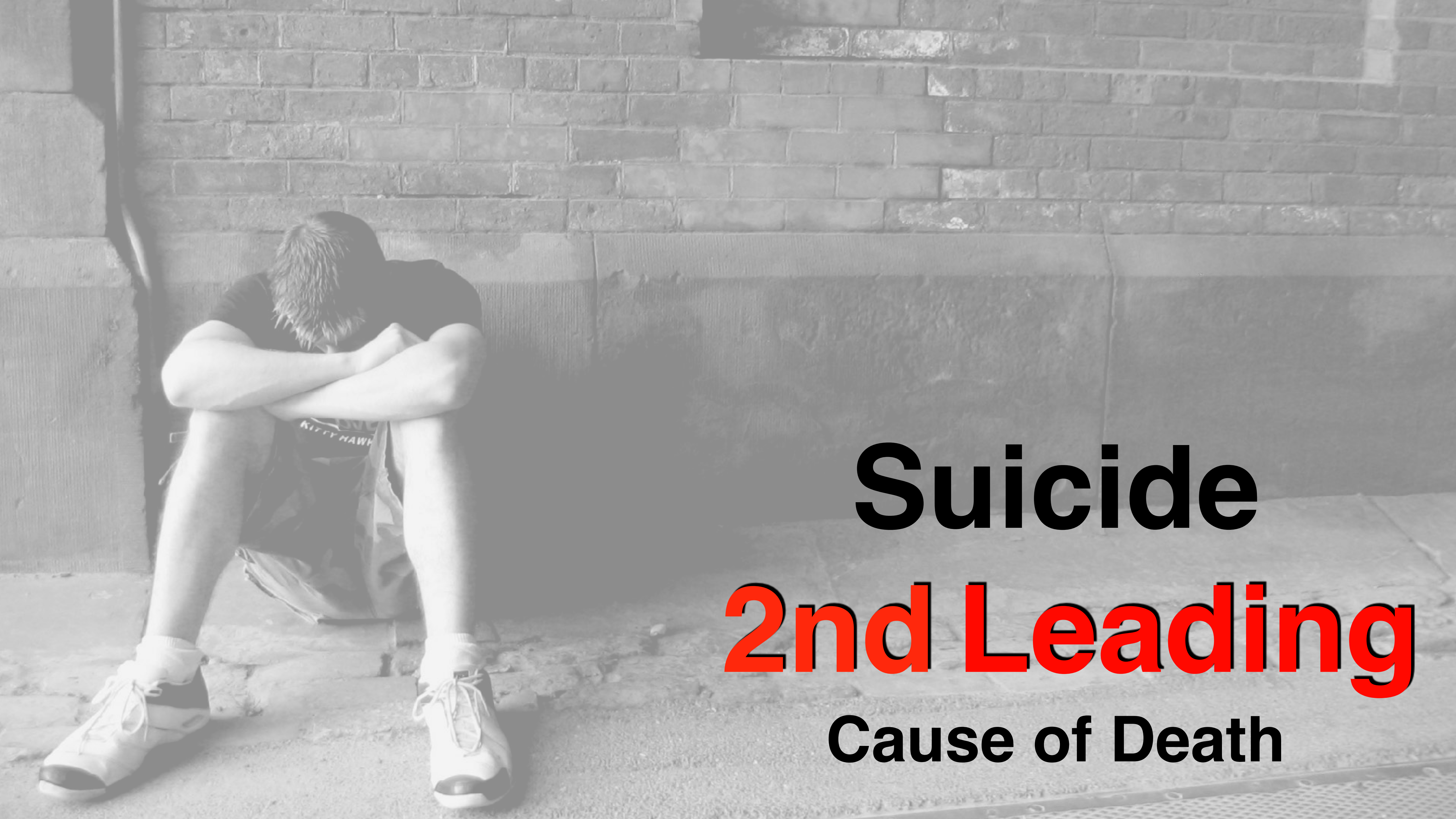
**True**

**Naming a race after a young woman  
who has completed suicide can make  
suicide more attractive to teens.**

**True**

**Suicide is the 4th leading cause  
of death in adolescents today.**

**False**



# **Suicide**

# **2nd Leading**

## **Cause of Death**

# Top suicide rates in Western states

In 2014, U.S. suicides accounted for 63 percent of all U.S. gun deaths – far outnumbering gun homicides and accidental deaths. The highest suicide rates were in Western states.

**Average U.S. suicide rate per 100,000 population, 2014**

7.7 - 10    10.1 - 15    15.1 - 20    20.1 - 23.8

